

From [Future New York](#)

Mapping NYC's Penthouses: Inside Look at the Most Desirable Top-Floor Apartments



By [Michelle Mazzarella](#)
Thursday, March 29, 2018



The Residences at The Even Hotel

Technically speaking, a building's penthouse is the apartment on the highest floor, which naturally provides the best views in the building. However, developers and designers outfit these apartments with fabulous finishes and extras to make them the most luxurious and coveted in the building. And if "penthouse" has become synonymous with luxury, these listings are the epitome of penthouse life.

d'Orsay, 211 West 14th Street, #PENTHOUSE | \$8,950,000

Chelsea | 3 bedrooms, 3.5 baths | 2,653 square feet



All images of d'Orsay via Stribling



Kitchen



Bedroom



Roof terrace

This fabulous and luxurious full-floor penthouse has high ceilings and nearly 1,300 square feet of terrace, including a 252-square-foot south-facing terrace off of the great room and an enormous 1,040-square-foot rooftop terrace with an outdoor kitchen and gas fireplace. The apartment has spectacular views in all directions, and especially to the south towards Downtown and the World Trade Center, as well as west towards the Hudson River. [Read more.](#)

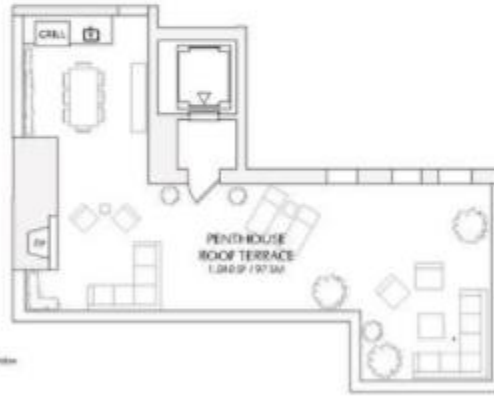
d'Orsay

211 W 14TH

PENTHOUSE

3 BEDROOMS
3 BATHROOMS
POWDER ROOM

2,693 SF / 247 SM
TERRACES
1,282 SF / 120 SM



212 201 1414 | sales@theorsey.com

Abelco *Stirling*

© 2014 The Orsey Group, LLC. All rights reserved. This floor plan is a conceptual drawing and is not intended to represent an actual floor plan. The actual floor plan may vary from this drawing. The actual floor plan shall be the final floor plan as approved by the City of New York. The actual floor plan shall be the final floor plan as approved by the City of New York.

Floor plan via Stirling

QUINN