

Sunny, Full-Floor Home with 50'-Long Terrace Unveiled at d'Orsay



By **Michelle Sinclair Colman**

Today, January 22, 2019



The great room is filled with south-facing light through its industrial-sash windows

The d'Orsay recently unveiled a brand new model unit with their seventh full-floor residence, staged by **ASH NYC**. The **home** is on the market for \$8.15M and is a three-bedroom, three-and-a-half bath with 2,775 square feet of interior space and 455 square feet of outdoor space. A south-facing terrace runs along its entire south-facing exposure, offering sweeping views of downtown that include One World Trade Center.

Finished in 2018, the d'Orsay is an elegant, 11-story apartment building located at 211 West 14th Street between Seventh and Eighth avenues, where the West Village, Chelsea, and the Meatpacking neighborhoods meet. The building has 21 condominium units brought to market by Adellco, which is headed by Matthew Adell. **Hill | West** served as the building's architects and its public face is distinguished by a warm brick envelope, inset terraces, and industrial-style windows.



Renderings of d'Orsay from The Neighbourhood



Floorplan of seventh floor unit (Corcoran Sunshine)

d'Orsay
211 W 14TH

SEVENTH FLOOR RESIDENCE

4 BEDROOMS
3 BATHROOMS
PENTHOUSE ROOM
2,810 SF / 263 SQM

TERRACE
100 SF / 9.3 SQM



SALES/LEASING: 212-692-1234 • 100 West 14th Street, New York, NY 10011

212-692-1234 • info@corcoran.com

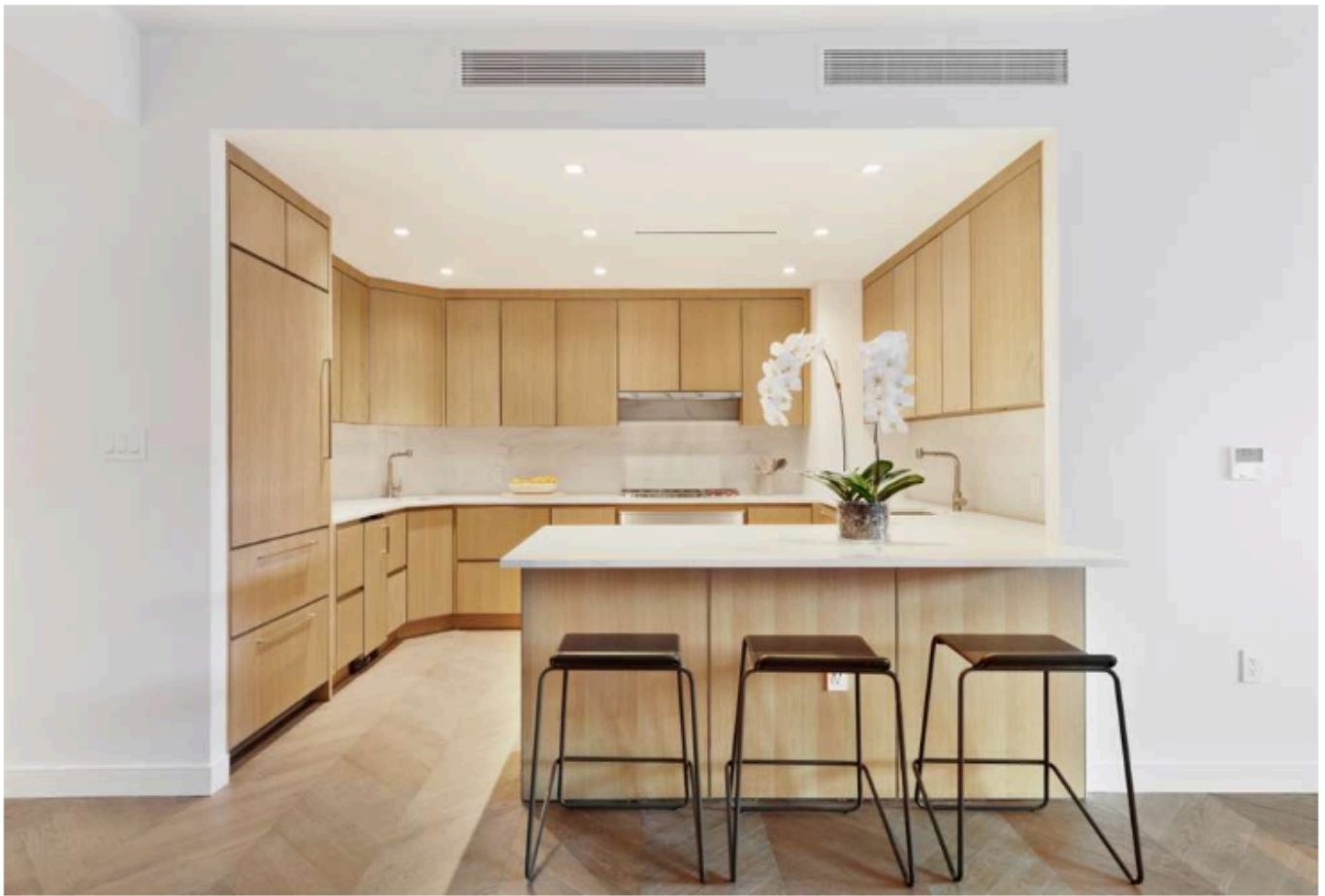
ARIELLO Sterling

© 2014 Corcoran Sunshine LLC. All rights reserved. The d'Orsay is a registered trademark of Corcoran Sunshine LLC. The d'Orsay logo is a registered trademark of Corcoran Sunshine LLC. The d'Orsay logo is a registered trademark of Corcoran Sunshine LLC.

ASH NYC drew their design inspiration from France, starting with the Parisian AD 100 building designer **Jacques Garcia**. ASH NYC say they “find inspiration in the confluence of history and innovation. The past lends us the wisdom of civilizations before us; the future is limitless with the possibility of what has yet to be imagined.” The d’Orsay model apartment is the perfect blend of history and innovation from the charm of the casement windows to the high ceilings and luxe, modern finishes.



Model home interior of seventh floors unit at The d'Orsay (All photos credit of Donna Dotan)



Kitchen





The dining area also provides direct access to a the gracious south-facing terrace

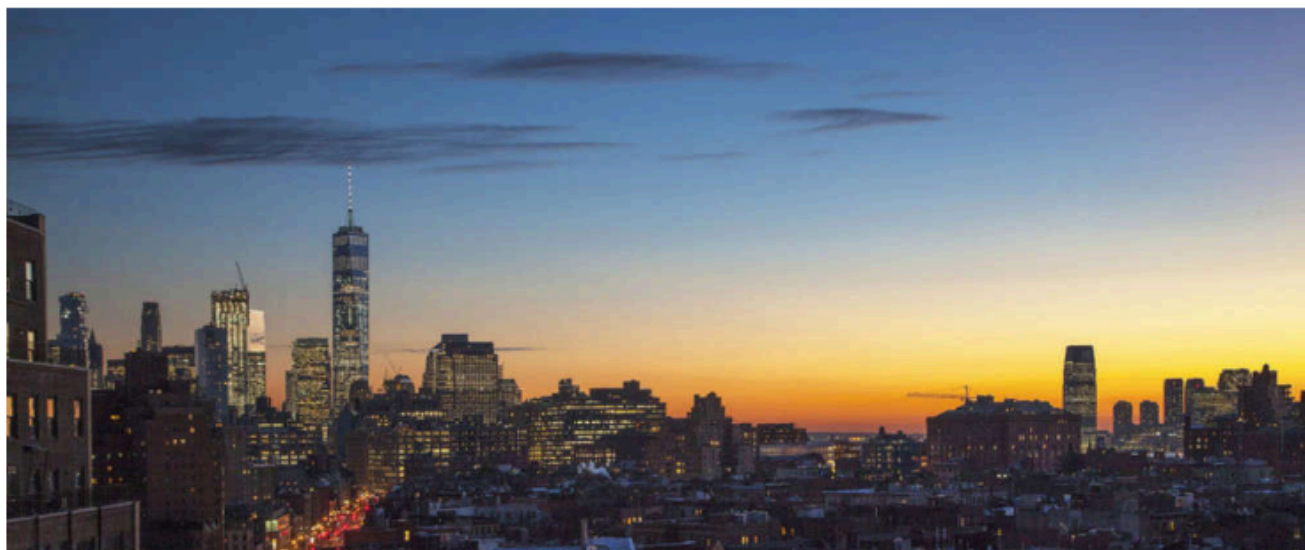


The master bedroom has northern exposures and overlooks a private courtyard



The model home has an ethereal feeling with its over 10-foot ceilings and abundant light flooding in through the multiple large walls of casement windows. Like all of d'Orsay's residences, the home has direct keyed elevator access. The three-bedroom has a large great room and dining room ideal for entertaining with an elegant terrace. The kitchen features honed marble slab countertops and Wolf and Sub-Zero appliances.

The master bath highlights the custom vanity by Jacques Garcia, cast-iron soaking tub with marble deck and custom antique bronze tub filler, and herringbone marble floors. Additionally, the home is one of the select residences in the building that has an expansive terrace and wood burning fireplace in the entertaining room.



View south towards downtown

The d'Orsay's lobby was designed with a custom-designed black wood concierge desk and plasterwork frieze wall. The building's amenities include a plunge pool with custom tiling and sconces by Jacques Garcia, a skylit fitness center and steam room, and a landscaped roof terrace with an outdoor kitchen. There is also a drawing room, a full-time concierge, a laundry room, bicycle storage, and private storage for purchase.



QUINN